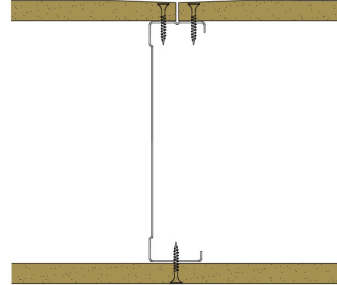


146-K-51 - SPEEDLINE System Data Sheet - Version V1 (24-10-23)

SPEEDLINE 146mm 'C' Stud Partition @600mm
Ctrs, with Knauf 12.5mm Wallboard each side



System Performance Breakdown

Fire Resistance:

BS476 Part 22:1987:

Test Ref & Date or Applied Ref & Report:

Max Height:

Thickness:

Duty Grade: BS 5234: Part 2:1992:

Sound Insulation:

30/30 Minutes (Integrity/Insulation).

BTC 17436F - BRE Report P102396-1011B

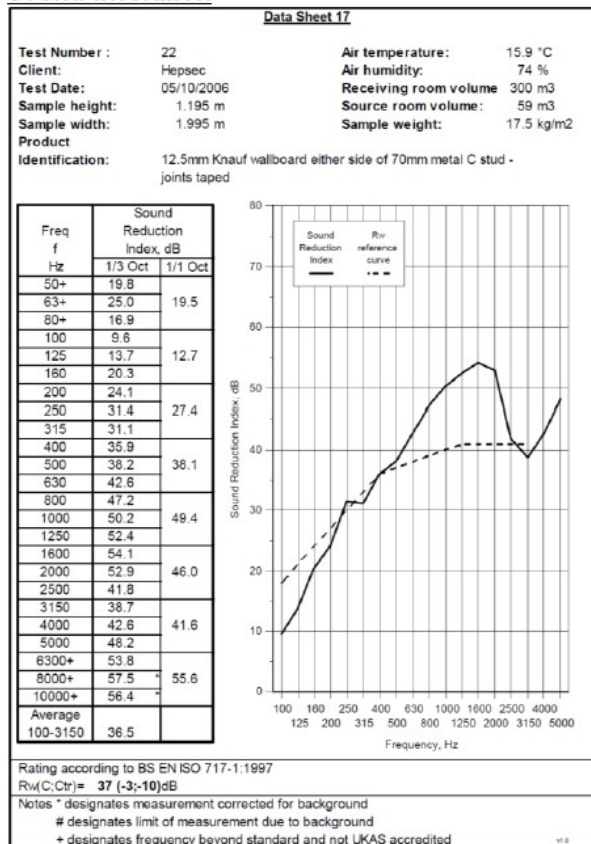
Refer to Speedline Specification Clause

173 mm. (At Base Track, Excluding Finishes)

Medium - Annexes A-F

37 R_wdB, Date Tested or Assessed Against - 70-K-51

Sound Insulation



TESTED AT ONE OF THE UKAS
ACCREDITED LABORATORIES
BELOW

B.T.C (H-Ref on Graph)	
B.R.E	
AIRO	
S.R.L	

SPEEDLINE Drywall Systems, Adsetts House, 16 Europa View, Sheffield Business Park, Sheffield, S9 1XH.

Tel: 0114 231 8030.

Email: enquiries@speedlinedrywall.co.uk

(As per the requirements set out in ISO/IEC 17025:2017 regarding test data the results stated have been carried out by voestalpine Metsec plc as part of the contract to supply Speedline Metal Sections to SIG Plc)